

## **FISCAL POLICY AND ECONOMIC GROWTH IN NIGERIA: EMPHASIS ON VARIOUS COMPONENTS OF PUBLIC EXPENDITURE**

**Agu Sylvia. U. Ph.D**  
**Idike Adeline, N. Ph.D**  
**Okwor Ifeoma M.I Ph,D**  
**Ugwunta David**

### **Abstract**

This paper aims at determining the impact of various components of fiscal policy on the Nigerian economy. We simply used descriptive statistics to show contribution of government fiscal policy to economic growth, ascertain and explain growth rates, and an OLS in a multiple form to ascertain the relationship between economic growth and government expenditure components after ensuring data stationarity. Findings reveal that total government expenditures have tended to increase with government revenue, with expenditures peaking faster than revenue. Investment expenditures were much lower than recurrent expenditures evidencing the poor growth in the country's economy. Hence there is some evidence of positive correlation between government expenditure on economic services and economic growth. An increase in budgetary allocation to economic services will lead to an enhancement in economic stability. Therefore, in public spending, it is important to note that the effectiveness of the private sector depends on the stability and predictability of the public incentive framework, which promotes or crowds in private investment.

### **1. INTRODUCTION**

Fiscal policy is the means by which a government adjusts its level of spending in order to monitor and influence a nation's economy. It is used along with the monetary policy which the central bank uses to influence money supply in a nation. These two policies are used to achieve macroeconomic goals in a nation. These goals include price stability, full employment, reduction of poverty levels, high and sustainable economic growth, favourable balance of payment, and reduction in a nation's debt.

Nigeria's potential for growth and poverty reduction is yet to be realized. A key constraint has been the recent conduct of macroeconomics, particularly fiscal and monetary policies. This has led to rising inflation and decline in real incomes. National economic management became a Herculean task as the economy has to contend with volatility of revenue and expenditure. The widespread lack of fiscal discipline was further exacerbated by poor coordination of fiscal policy among the three tiers of government. Also, there is a weak revenue base arising from high marginal tax rate with very narrow tax base, resulting in low tax compliance. (Odewunmi, 2012). As a result of these and other factors serious macroeconomic imbalances have emerged in Nigeria. A review of these macroeconomic indices shows that inflation has accelerated to double-digit levels (from 6.94 in 2000 to 18.87 in 2001), (IMF,

2001). This double digit inflation continued up to 2005, and decreases to single digit in 2006 and 2007. In 2008 the inflation rate reverted to double digit - 11.58 and continued to increase and in 2010 it was 13.72% (IMF, 2011). Unemployment is a major political and economic issue in most countries. In Nigeria the years of corruption, civil war, military rule and mismanagement have hindered economic growth of the country. Nigeria is endowed with diverse and huge resources both human and material. However years of negligence and adverse policies have led to the under-utilization of these resources (Economic Watch, 2010), and this has contributed to the increasing unemployment rate in Nigeria. In 2000 the unemployment rate was 13.1%. On the average there has been an upward trend and in 2010 it was 21.10% (Nigerian Bureau of Statistics 2010, CBN 2005, 2006, 2009).

Poverty reduction has been a major goal of various governments. This is evidenced by the fact that various governments have introduced different programmes to reduce poverty levels. Examples are Nigerian Directorate of Employment (NDE) introduced in 1989 and the National Poverty Eradication Programme (NAPEP) introduced in 2001. Per capita income is the major index for measuring poverty level. Per capita income in Nigeria has been increasing steadily from year 2000 when it was N39,657 to N71,131 in year 2010, (IMF, 2011). This increase in per capita income has not led to an increase in the standard of living of the citizens because of increasing cost of goods and services.

The rising profile of Nigeria's indebtedness is a sour point in the public finance management and speaks volumes of the fiscal discipline of political actors' attitude to the sovereignty of Nigeria. According to Nwankwo (2010) Nigeria debt profile was \$32.5 billion as at September 2010, ie N5,241,667m as at September 2010. In year 2000, the total outstanding debt of Nigeria was N3,995,638m. There continued to be an upward trend until in 2006 when it came down to (N3,177,409m) because of debt cancellation agreement between Nigeria and Paris Club (Okwo, 2010). Thereafter, it started rising again and reached N5,241,667m in 2010. The expenditure pattern of Nigeria has been on the increase. In 2000, the total expenditure was N701,059m. It has increased steadily and in 2010 it was N4,199,429m.

Generally, increase in expenditure should lead to reduced unemployment rate but in Nigeria the reverse is the case i.e as total expenditure increases, rate of unemployment increases. This is because a greater percentage of the total expenditure is channeled to recurrent expenditure and the proportion is worsening. In 2000, the percentage of the total expenditure spent on recurrent was 66% and has increased to 79% in 2010. The implication is that less percentage of the total expenditure is spent on capital project which creates job in the economy.

One of the major issues raised against Nigeria's 2012 budget is the high rate of recurrent expenditure. Based on the budget, government proposed spending most of its money on running the administration rather than in the badly needed infrastructure projects to create jobs and boost growth in the continent's second largest economy (Olajide and Adekoya, 2012). This paper aims at determining the extent to which Nigeria's fiscal policy has impacted on the economy with emphasis on the impact of various components of public expenditure on the economy.

## **2. THEORETICAL FRAMEWORK AND LITERATURE REVIEW**

Various researchers have written on different aspects of fiscal policy especially as it relates and affects the macroeconomics of the economy. Fiscal policy is defined as the means by which a government adjusts its levels of spending in order to monitor and influence a nation's economy

(Reem, 2009). The policy is used along with monetary policy in different combinations to direct a country's goals. According to Reem (2009) fiscal policy is based on the theories of British economist John Maynard Keynes whose theory basically states that governments can influence macroeconomic productivity levels by increasing or decreasing tax levels and public spending. This influence, in turn, curbs inflation, increases employment and maintains a healthy value of money. Various researchers have written on different aspects of fiscal policy especially as it relates to macroeconomic productivity levels.

The studies of the effect of public expenditure on the economy has shown a positive relationship Ram(1996);Barro(1991);Easterly and Rebelo(1993) Otani and Villanvera(1990) Komain et al(2007);Ranjan and Sharma(2008); Cooray(2009); Wu et al(2010); Nworji et al(2012) while other like Abu-Bader and Abu-Qarn(2003); Laudau(1986) found negative relationship. However, Kormendi and Megure (1995) could not find any relationship.

Adefeso and Mobalaji (2010) wrote on the fiscal-monetary policy and economic growth in Nigeria. Their major objective was to re-estimate and re-examine the relative effectiveness of fiscal and monetary policies on economic growth in Nigeria using annual data from 1970-2007. The Error correction mechanism and co-integration technique were employed to analyze the data and draw policy inferences. Their result showed that the effect of monetary policy is much stronger than fiscal policy. They suggested that there should be more emphasis and reliance on monetary policy for the purpose of economic stabilization in Nigeria.

In the same vein, Olawunmi and Ayinka (2007) examined the contribution of fiscal policy in the achievement of sustainable economic growth in Nigeria using slow growth model estimated with the use of ordinary least square method. It was found that fiscal policy has not been effective in the area of promoting sustainable economic growth in Nigeria. They however, stated that factors such as wasteful spending, poor policy implementation and lack of feedback mechanism for implemented policy evident in Nigeria which are indeed capable of hampering the effectiveness, of fiscal policy have made it impossible to come up with such a conclusion. Mueller (2011) investigated economic, political and institutional constraints to fiscal policy implementation in sub-Saharan Africa. It was found that planned fiscal adjustments or expansions are less likely to be implemented. The larger they are, the more inaccurate the growth forecasts they are based on. The finding supports on going efforts in the region to improve the quality and timeliness of economic data, enhance forecasting capacity, adopt realistic fiscal plans, and strengthen governance, budgetary institutions, and public financial management procedures.

Ogbole, Amadi and Essi (2011) wrote on fiscal policy: its impact on economic growth in Nigeria (1970-2006). The study involves comparative analysis of the impact of fiscal policy on economic growth in Nigeria during regulation and deregulation periods. Econometric analysis of time series data from Central Bank of Nigeria was conducted. Results showed that there is difference in the effectiveness of fiscal policy in stimulating economic growth during and after regulation period. Appropriate policy mix, prudent public spending, setting of achievable fiscal policy targets and diversification of the nation's economic base, among others, were recommended.

In the same vein but covering a shorter period Adeoye (2011) analysed the impact of fiscal policy on economic growth in Nigeria in 1970-2002. The finding shows that public investment negatively affects output growth implying that public expenditure has a crowding out effect on private investment.

Chuku (2010) uses quarterly data to explore the monetary and fiscal policy interactions in Nigeria between 1970-2008. The paper examines the nature of fiscal policies in Nigeria using vector auto-regression (VAR) model. The evidence indicates that monetary and fiscal policies in Nigeria have interacted in a counteractive manner for most of the sample period (1980-1994) while at other periods no symmetric pattern of interaction between the two policy variables was observed.

Huang and Padilla (2002) wrote on fiscal policy and implementation of the Walsh Contract for Central Bankers. They developed a simple macroeconomic model where the time inconsistency of optimal monetary policy is due to tax distortions. They concluded that implementing the optimal policy mix requires either that central bank enjoy primacy over the fiscal authority or that fiscal policy be also delegated to an independent authority.

Omitogun and Ayinla (2007) examined empirically the contribution of fiscal policy in the achievement of sustainable economic growth in Nigeria. They used Solow growth model estimated with the use of ordinary least square method and found out that fiscal policy has not been effective in the area of promoting sustainable economic growth in Nigeria. They suggested that Nigerian government should put a stop to the incessant unproductive foreign borrowing, wasteful spending and uncontrolled money supply and embark on specific policies aimed at achieving increased and sustainable productivity in all sectors of the economy.

Amin (1998) analysed the relationship between public and private investment stressing the crowding in or crowding out of private investment by public expenditures in Cameroon. Based on secondary data from the public sector, the results of a growth model show that the relevant factors have positive effects on growth while those of the investment model show the crowding in of infrastructures and social sector. The study concluded by recommending the relocation of more resources to productive sectors and increasing and sustaining of spending on those productive sectors or those components of public expenditures that crowd in the private sector.

Njoku and Ihugba (2011) looked at the relationship between unemployment and growth in Nigeria (1985-2009). One major findings of the study is that the economy grew by 55.5 percent between 1991-2006 and the population increased by 36.4 percent. This should ordinarily have resulted to a decrease in the rate of unemployment but rather unemployment increased by 74.8 percent.

Davis, Ossowski and Fedelino (2003) looked at fiscal policy formulation and implementation in oil producing countries. Their study showed that resource dependent economies tend to grow more slowly than non resource dependent ones at comparable levels of development. Poverty is still widespread in a number of oil-producing countries. They concluded that a pattern of fluctuating fiscal expenditures associated with oil volatility has entailed significant economic and social costs for a number of oil producers. Anerbach (2009) suggested that for fiscal discretionary policy to be practiced on a large scale attention must be paid to policy design.

### **3. Methodology**

To gain better insight into the contribution of government fiscal policy to Nigeria's economic growth, we examine the growth effects of public income and spending via budget surplus or deficit. To motivate our discussion initially, we examined the contribution of public income and expenditure to economic growth in Nigeria. More so we try to disaggregate the

public expenditures into the different components and examine each component growth rates and the share of each component in total expenditure. We then find how each component correlate with economic growth (GDP).

We simply used descriptive statistics to show contribution of government fiscal policy to economic growth, ascertain and explain growth rates, and an OLS in a multiple form to ascertain the relationship between economic growth and government expenditure components after ensuring data stationarity.

In this study, annual data, spanning a period of forty nine years, from 1961-2010 were used. Data were obtained from the Central Bank of Nigeria statistical bulletin. To measure the relationship between GDP and other explanatory variables we adopt a generic regression equation specified in the following form:

$$Y_t = f(GOVC_t) + u_t \dots\dots\dots(1)$$

Where  $Y_t = GDP$

GOVC = Government consumption

$$Y_t = f(Admin_t, SCS_t, EconS_t) + u_t \dots\dots\dots(2)$$

Where  $Y_t = GDP$ .

Admin<sub>t</sub> = Administration.

SCS = Social and Community Services.

Econs = Economic Services.

Expressing the relation in linear form using the variables in natural log in order to minimize the scale effect of numbers, we arrive at the following estimating equation:

$$\text{Logn}Y_t = X_0 + X_1\text{logn}GA_t + X_2\text{logn}Def_t + U_t \dots\dots\dots(3)$$

$$\text{Logn}Y_t = X_0 + X_1\text{logn}Edu_t + X_2\text{logn}Health_t + U_t \dots\dots\dots(4)$$

$$\text{Logn}Y_t = X_0 + X_1\text{logn}Agric_t + X_2\text{logn}Const_t + X_3\text{logn}Trans\&Com_t + U_t \dots\dots\dots(5)$$

- Where GA = General Administration expenditure.
- Def = Defence expenditure.
- Edu = Education expenditure.
- Health = Health expenditure.
- Agric = Agriculture expenditure
- Const = Construction expenditure
- Trans&Com = Transport and Communication

**3.1 Description of Variables.**

Gross Domestic Product is the naira value of goods and services produced in Nigeria during a time period irrespective of the nationality of the individuals who produced the goods or services. It is calculated without making deductions for depreciations. GDP at current basic prices is simply nominal GDP equals GDP less indirect taxes net of subsidies (CBN Statistical bulletin, 2007). The Gross Domestic Product is a widely acknowledged measure of economic growth and is used in this paper as a proxy for Nigerian economic growth.

The size of government (GOVC): We use government consumption measured by recurrent expenditure and capital expenditure to proxy for the size of the government. This may have either a negative or positive impact depending on the magnitude of the negative effects caused by the financing effects of this consumption. Empirical studies (Blejer and Khan, 1984; Gramlich, 1994; Ekpo, 1994; Kelly, 1997 as cited by Aloysius, 1998) have shown that public spending on such components as infrastructure is complementary with private investment. Government expenditures would have both direct and indirect effects on long-run growth.

Directly the capital spending would improve physical infrastructure, with spending on education and health contribute to human capital formation, thus increasing productive capacity.

The subscript  $t$  represents the time period whereas  $\text{Logn}$  indicates natural log - the parameters to be estimated and  $u_t$  is an error term. The variables are transformed into logarithmic form in order to minimize the scale effect of numbers.

**Data testing procedure.**

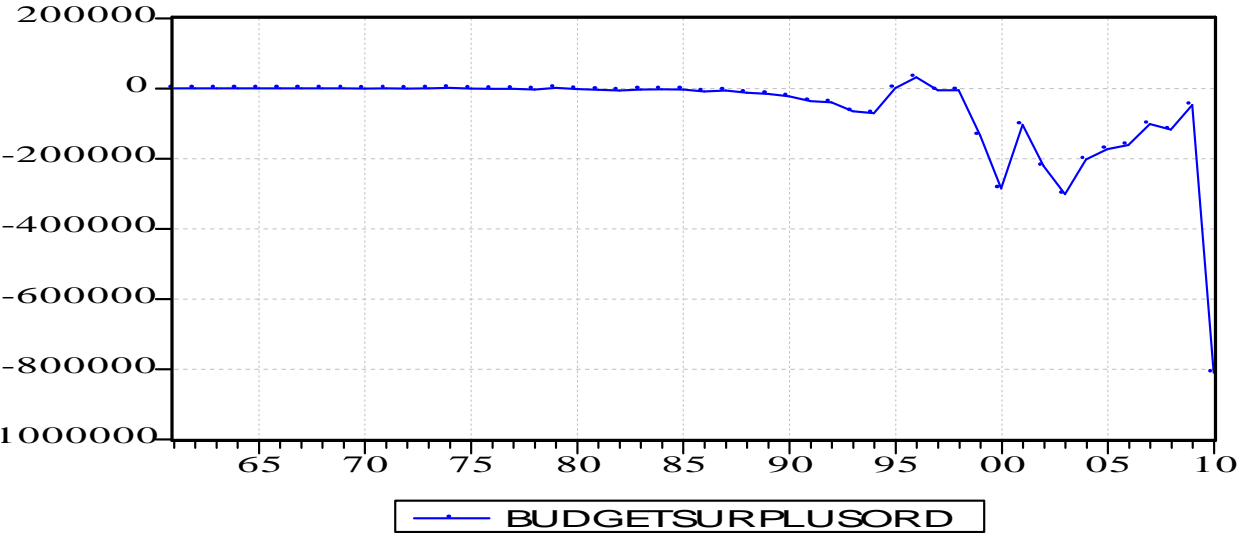
Stationary properties of the time series data before the first stage of the model were estimated. Therefore, stationary statuses of the variables were investigated by the Augmented Dickey Fuller (ADF) unit root test to guard against spurious regression results.

The expected signs of social and community services expenditure components as well as economic services expenditure components coefficients are positive while that of administration are expected to be negative. The data are time series with an annual observation and covers the period 1961-2010. The bounds testing procedure is the Ordinary Least Square (OLS). The test is done in two stages. First, we test for data stationary. Secondly, we test for relationships and magnitude.

**4. Discussion of Findings.**

Given total public expenditure and revenue composition in Nigeria, government expenditures have tended to increase with government revenue, with expenditures peaking faster than revenue and crowding out revenue (Figure 1).

**Figure 1. Nigeria Government overall Budget Surplus (+) or Deficit (-) in Billion Naira.**



Source; Central Bank of Nigeria Statistical Bulletin 2011.

Public expenditures have been increasing. The trend shows that the country started in 1961 with a surplus budget until 1970 when it recorded its 1<sup>st</sup> deficit of (455.10) billion naira. Afterwards, the country recorded a surplus of 171.60 billion naira, 166.10 billion naira, 1,796.40 billion naira, 1,461.70 billion naira, 1,000.00 billion naira, and 32,049.40 billion naira in years 1971, 1973, 1974, 1979, 1995 and 1996 respectively. The rest of the period were marked with deficit financing as the years progressed and reached its peak at the end of the period, year 2010, with (1,105,439.78) billion naira deficit.

**Government's expenditure**

The size of the government sector in the economy could be measured in terms of employment, economic activities or expenditure (Aloysius, 1998). Usually the importance of the public sector is in the expenditures (Aloysius, 1998). Total public expenditure in Nigeria can be classified into four main categories:

1. Administration (General administration; Defence; Internal Security; National Assembly).
2. Social and Community Services (Education; Health; other social and community services).
3. Economic Services (Agriculture; Construction; Transport & Communication; Other economic services).
4. Transfers (Public debt servicing; Pensions and gratuities; Contingencies/subventions and Other/Other CFR charges).

Nigeria's expenditures are actually in two main accounts: - current and investment accounts. Usually investment or development or capital spending is separated from public consumption or current budget with revenues earmarked for consumption expenditures and any surplus may be allocated to the investment budget. Because of demands and pressures on the government it has not been easy to apply this system of budgeting.

Given the growth rates and shares of different components of public expenditures since the 1960s, there have been two major periods of economic performance in Nigeria pre and post Structural Adjustment Programme (SAP) in 1986. The Nigerian Government in June 1986 adopted a comprehensive structural adjustment program (SAP) that signaled a radical departure from previous reform efforts. It emphasized reliance on market forces and the private sector in dealing with the fundamental problems of the economy. The objectives of the SAP were, among others, to:

- restructure and diversify the productive base of the economy so as to reduce dependency on the oil sector and imports;
- achieve fiscal and balance of payments viability over the medium term; and
- promote non-inflationary economic growth.

**Table 1: Growth Rates of Different Government Expenditure in Percentages Pre-SAP.**

Years	General Admin.	Defense	Internal Security	National Assembly	Education	Health	Agric.	Construction	Trans & Com.	Debt Servicing
1961	NA	NA	NA	NA	NA	NA	NA	NA	NA	NA
1962	46.49	97.59	NA	NA	77.65	26.99	-45.3	-60.86	-12.3	NA
1963	177.66	-9.23	NA	NA	-12.5	0.626	2253	4014.4	-23.5	NA
1964	-12.71	68.76	NA	NA	38.77	55.66	-85.3	132.35	6.226	NA
1965	-4.91	-3.22	NA	NA	8.873	-47.9	661	17.422	34.38	NA
1966	-1.76	-4.29	NA	NA	12.51	-70.9	57.74	-5.985	23.89	NA
1967	-48.97	128.61	NA	NA	-59.3	31.04	-27.5	57.583	-30.7	NA
1968	-65.16	84.30	NA	NA	-58.5	-54.3	-89.6	10.232	-39.2	NA
1969	2,536.99	NA	NA	NA	634.1	2210	61.67	-79.56	-88.6	NA
1970	65.22	NA	NA	NA	65.22	65.22	65.22	65.222	65.22	65.222
1971	124.45	NA	NA	NA	-83.9	1.308	100.3	9.2306	8.578	-46.25

1972	17.72	NA	NA	NA	32.64	12.83	130.5	-4.433	1.999	-17.51
1973	2.02	NA	NA	NA	59.41	2.9	20.92	18.352	48.19	11.063
1974	-14.68	NA	NA	NA	319.4	10.97	28.12	-2.297	-29.5	-0.035
1975	96.25	NA	NA	NA	261.7	121.5	62.89	85.431	108.6	45.363
1976	4.81	NA	NA	NA	161.1	46.52	-47.8	45.927	49.46	747.4
1977	13.84	NA	NA	NA	-47.4	12.52	150.9	9.4837	9.724	-85.44
1978	-22.93	NA	NA	NA	-3.7	-31.9	-70.4	-34.19	-6.79	130.68
1979	-19.38	NA	NA	NA	-9.6	-62.2	5.285	-94.38	-20.7	-25.8
1980	31.58	NA	NA	NA	3.025	244.7	87.35	2337.6	94.78	11.987
1981	53.73	NA	NA	NA	6.175	59.98	-24	110.01	18.74	299.84
1982	13.60	NA	NA	NA	13.6	13.6	13.6	13.603	13.6	13.603
1983	-13.72	NA	NA	NA	-13.7	-13.7	-13.7	-13.72	-13.7	-13.72
1984	22.66	NA	NA	NA	22.66	22.66	22.66	22.664	22.66	22.664
1985	30.01	NA	NA	NA	30.01	30.01	30.01	30.011	30.01	30.011

Source; Authors' Calculation.

The period before the introduction of SAP witnessed varying degrees of percentage increases and decreases. Internal security and National Assembly does not have budgetary allocation during this period while there was no public debt to service until 1970. In 1962, the percentage increases in agriculture, construction, transport and communication recorded sharp decreases of -45.3%, -60.86% and -12.3% respectively.

General administration expenditure after rising to 177.66% in 1963 recorded steady negative growth rates until 1968 while recording an increase of 2,536.99% in 1969. The expenditure for general administration ended the pre SAP period on a positive growth rate of 30.01%. Defense had the highest growth rate of 128.61% in 1967 while not having allocation data for the rest of the period. Also in 1969, education and health recorded an outstanding 634.1% and 2210% growth rates in budgetary allocations.

Expenditure on agriculture received the highest expenditure of 2253% in 1963 alongside construction which rose to an all-time high of 4014.4% in 1963. Transport and communication received the highest budgetary allocation of 108.6% in 1975 while the highest expenditure on debt servicing was recorded in 1976 at 747.4%.

In 1983 in a bid to reverse the worsening economic fortunes in terms of declining growth, increasing unemployment, galloping inflation, high incidence of poverty, worsening balance of payment conditions, debilitating debt burden and increasing unsustainable fiscal deficits, among others, government embarked on austerity measures in 1982 by slashing government expenditure across components. This resulted in a decline of expenditure across the government expenditure components by 13.65% approximately in 1982 and 1983.

**Table 2: Growth Rates of Different Government Expenditure in Percentages Post-SAP.**

Years	General Admin.	Defense	Internal Security	National Assembly	Education	Health	Agric.	Construction	Trans & Com.	Debt Servicing
1986	1.59	NA	NA	NA	1.59	1.59	1.59	1.5905	1.59	1.5905

<b>1987</b>	164.50	NA	NA	NA	-14.4	-69.2	123	166.48	250.8	140.8
<b>1988</b>	50.34	NA	NA	NA	548.3	923.4	79.87	69.552	25.82	135.14
<b>1989</b>	8.53	NA	NA	NA	106.5	36.07	82.89	-29.21	29.93	43.675
<b>1990</b>	4.30	NA	NA	NA	-20.2	-13	69.96	29.206	-2.51	79.47
<b>1991</b>	6.32	NA	NA	NA	-47.7	23.47	-19.1	-35.88	-17.1	10.881
<b>1992</b>	24.89	NA	NA	NA	-76.8	-75.7	118.5	180.45	131.5	-26.55
<b>1993</b>	252.01	NA	NA	NA	2949	2478	295.6	103.66	267	317.94
<b>1994</b>	-60.96	NA	NA	NA	-16.9	-45.9	-34.4	-50.76	-78	-39.07
<b>1995</b>	41.64	56.86	19.61	NA	32.02	58.58	27.64	48.511	142.6	3.3564
<b>1996</b>	45.33	64.05	112.3	NA	17.95	-8.94	5.44	-45.12	91.37	3.8957
<b>1997</b>	25.85	31.26	-0.87	NA	29.2	28.69	29.28	93.885	-23.7	29.204
<b>1998</b>	-22.58	3.92	8.315	NA	-8.51	21.87	40.45	211.65	21.68	-6.048
<b>1999</b>	258.46	260.06	222.7	NA	220.9	250.9	1951	195.3	478.8	-52.1
<b>2000</b>	-21.37	-18.35	-34.9	41.38	32.9	-8.54	-89.3	-70	-72.7	324.88
<b>2001</b>	11.30	8.45	54.46	132.48	-31.2	61.14	11.5	44.298	1018	18.595
<b>2002</b>	57.10	46.88	62.76	-18.20	101.9	65.65	41.46	3.4727	-13.4	5.4017
<b>2003</b>	40.85	-26.14	8.134	38.31	-19.6	-18.1	-24.6	127.47	-22.8	121.91
<b>2004</b>	-39.00	49.46	43.02	40.06	18.13	2.793	49.34	-12.12	-64.4	5.2267
<b>2005</b>	145.45	-6.09	-16.2	2.99	8.194	62.77	45.04	20.259	-0.38	2.9917
<b>2006</b>	14.42	17.48	43.99	9.84	43.73	11.93	9.644	12.197	21.87	-36.72
<b>2007</b>	8.96	-14.37	53.64	76.90	26.72	31.46	81.56	254.73	228.6	-14.28
<b>2008</b>	19.19	-4.72	-47.2	213.54	8.753	19.9	101.2	32.539	109.3	78.381
<b>2009</b>	18.49	-20.17	131.4	-45.98	-16.4	-8.15	-65.7	-14.68	33.58	-33.95
<b>2010</b>	58.65	32.86	29.68	37.76	15.7	13.77	31.73	71.214	98.49	65.042

Source; Authors' calculation.

Arising from the minimal impacts of the 1982 austerity measures, an extensive structural adjustment programme was put in place in 1986 with emphasis on expenditure reducing and expenditure switching policies as well as using the private sector as the engine of growth of the economy via commercialisation and privatisation of government-owned enterprises. With the introduction of SAP, government expenditure growth rate fell from 30.01% in 1985 to 1.59% in 1986. In 1995 defense and internal security came on stream on government expenditure while national assembly came on stream with the return to civilian rule in 1999. The rest of the period recorded varying degree of percentage growth rates as well as suffering from negative growth rates for different components.

In 2009, during the peak of the world financial crises, defense, national assembly, health, education, agriculture, transfers, and construction suffered from negative expenditure growth rates while the end of the period ended in positive growth rates for the different components.

We disaggregated the basic government expenditure components and examined the share of different components in total government expenditure (table 3).

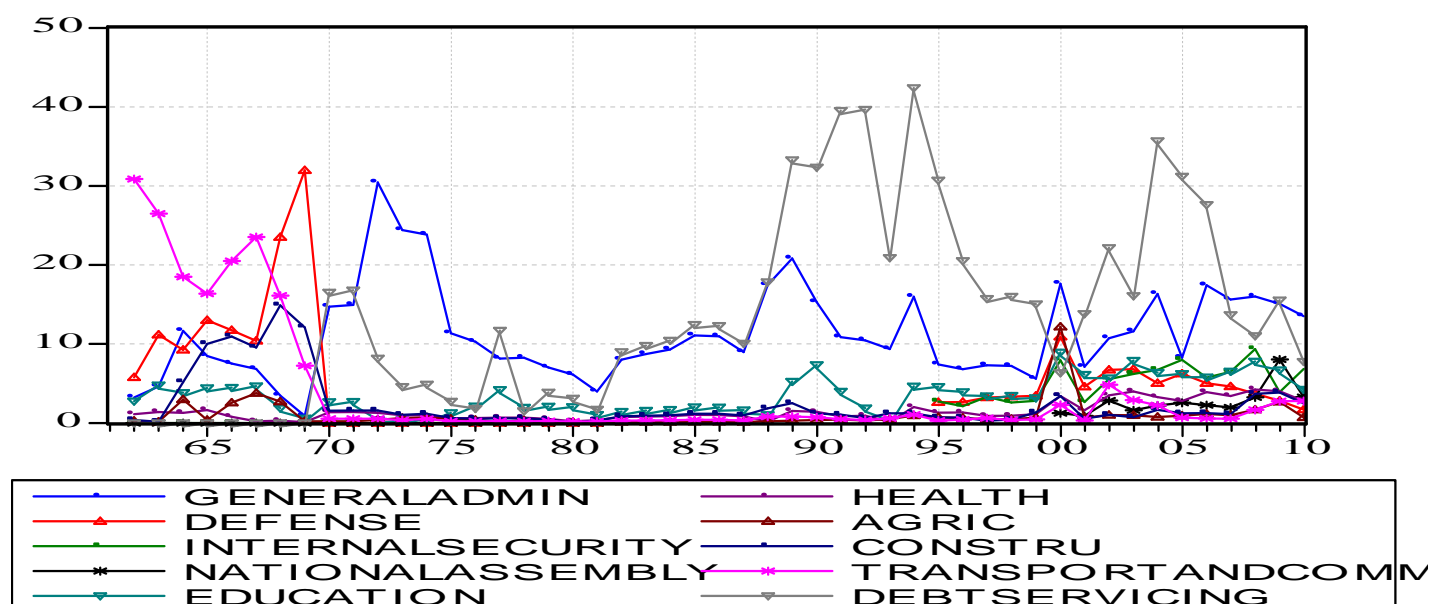
**Table 3: Share of Different Components in Total expenditure.**

Years	Gen. Admin.	Defense	Internal Security	National Assembly	Education	Health	Agric	Construction	Trans & Com.	Debt Servicing
1961	3.21	5.776	0	0	2.756	1.105	0.257	0.36	30.879	0
1962	4.602	11.17	0	0	4.79	1.374	0.138	0.138	26.488	0
1963	11.66	9.251	0	0	3.825	1.262	2.958	5.173	18.492	0
1964	8.478	13	0	0	4.421	1.636	0.363	10.01	16.361	0
1965	7.514	11.73	0	0	4.486	0.794	2.572	10.95	20.491	0
1966	6.84	10.4	0	0	4.677	0.214	3.76	9.543	23.523	0
1967	3.452	23.51	0	0	1.88	0.277	2.696	14.87	16.128	0
1968	0.887	31.96	0	0	0.576	0.093	0.206	12.09	7.2369	0
1969	14.71	0	0	0	2.66	1.358	0.209	1.554	0.5212	16.519
1970	14.95	0	0	0	2.704	1.381	0.213	1.58	0.5299	16.794
1971	30.43	0	0	0	0.396	1.268	0.387	1.564	0.5215	8.1818
1972	24.4	0	0	0	0.358	0.975	0.607	1.019	0.3624	4.5986
1973	23.83	0	0	0	0.545	0.96	0.703	1.154	0.514	4.8882
1974	11.34	0	0	0	1.276	0.594	0.502	0.629	0.2022	2.7266
1975	10.27	0	0	0	2.129	0.607	0.377	0.538	0.1946	1.8278
1976	8.139	0	0	0	4.205	0.673	0.149	0.594	0.2199	11.716
1977	8.249	0	0	0	1.969	0.674	0.333	0.579	0.2149	1.5192
1978	7.013	0	0	0	2.091	0.506	0.109	0.42	0.2209	3.8653
1979	6.107	0	0	0	2.042	0.207	0.124	0.025	0.1892	3.0979
1980	3.976	0	0	0	1.041	0.353	0.114	0.308	0.1824	1.7166
1981	8.016	NA	NA	NA	1.449	0.74	0.114	0.847	0.284	9.0015
1982	8.717	NA	NA	NA	1.576	0.805	0.124	0.921	0.3088	9.789
1983	9.306	NA	NA	NA	1.683	0.859	0.133	0.983	0.3297	10.451
1984	11.08	NA	NA	NA	2.004	1.023	0.158	1.171	0.3926	12.443
1985	10.97	NA	NA	NA	1.983	1.012	0.156	1.159	0.3886	12.315
1986	8.956	NA	NA	NA	1.619	0.827	0.128	0.946	0.3173	10.057
1987	17.45	NA	NA	NA	1.022	0.188	0.21	1.858	0.8201	17.844
1988	20.82	NA	NA	NA	5.257	1.524	0.299	2.5	0.8188	33.293
1989	15.28	NA	NA	NA	7.341	1.402	0.37	1.197	0.7195	32.353
1990	10.85	NA	NA	NA	3.987	0.831	0.428	1.053	0.4775	39.527
1991	10.44	NA	NA	NA	1.887	0.928	0.313	0.611	0.3583	39.671
1992	9.359	NA	NA	NA	0.314	0.162	0.491	1.229	0.5953	20.906
1993	15.99	NA	NA	NA	4.645	2.025	0.943	1.215	1.06	42.4
1994	7.417	2.614	2.732	NA	4.589	1.301	0.735	0.711	0.2769	30.704
1995	6.795	2.652	2.113	NA	3.918	1.335	0.607	0.683	0.4345	20.524

1996	7.284	3.21	3.309	NA	3.409	0.897	0.472	0.277	0.6134	15.731
1997	7.22	3.318	2.583	NA	3.469	0.909	0.481	0.422	0.3688	16.006
1998	5.589	3.448	2.798	NA	3.174	1.107	0.675	1.316	0.4487	15.038
1999	17.61	10.91	7.937	1.237	8.953	3.416	12.18	3.416	2.2832	6.3319
2000	7.118	4.58	2.654	0.899	6.116	1.606	0.669	0.527	0.3202	13.828
2001	10.71	6.714	5.542	2.825	5.689	3.498	1.008	1.027	4.8403	22.169
2002	11.59	6.791	6.212	1.591	7.91	3.99	0.982	0.732	2.8867	16.091
2003	16.32	5.015	6.716	2.2	6.363	3.267	0.74	1.665	2.2275	35.703
2004	8.266	6.225	7.977	2.56	6.242	2.789	0.918	1.215	0.6584	31.201
2005	17.44	5.025	5.746	2.266	5.805	3.903	1.145	1.256	0.5638	27.623
2006	15.62	4.621	6.476	1.948	6.531	3.419	0.982	1.103	0.5378	13.682
2007	16	3.72	9.355	3.24	7.781	4.226	1.677	3.679	1.6615	11.027
2008	15.08	2.803	3.909	8.034	6.691	4.007	2.668	3.856	2.75	15.553
2009	13.51	1.692	6.839	3.282	4.231	2.783	0.692	2.488	2.778	7.7693
2010	20.12	2.11	8.324	4.244	4.594	2.972	0.856	3.998	5.1752	12.035

Source; Authors' Calculation.

Fig 2. Graphical Representation of Share of different components in Total expenditure.



Source; Table 3.

A look at the evolution of the Nigeria governments' share of individual component expenditure on total expenditure revealed some interesting features. First, from the 1960s transport and communication expenditures has the highest share of 30.87% in 1961 but decreased steadily afterwards while picking up in 1965 to 20.49% to 23.52% in 1966 but decreased and dropped to below 1% from 1969 until 1993 when it increased to 1.06% while closing the period at 5.17% in 2010. This evidenced the high cost of doing business in the

country even with the introduction of the GSM in 2001.

With the outbreak of the Nigerian civil war in 1966, defense received a boost in budgetary allocation with the highest share of 31.96% in 1968 as all government effort was shifted to the execution of the war while the community, social and economic sectors suffered negatively.

In 1971, general administration received the highest share of 30.43% while education, health, agriculture, construction, transport and communication received meager 0.39%, 1.26%, 0.38%, 1.56% and 0.52% respectively.

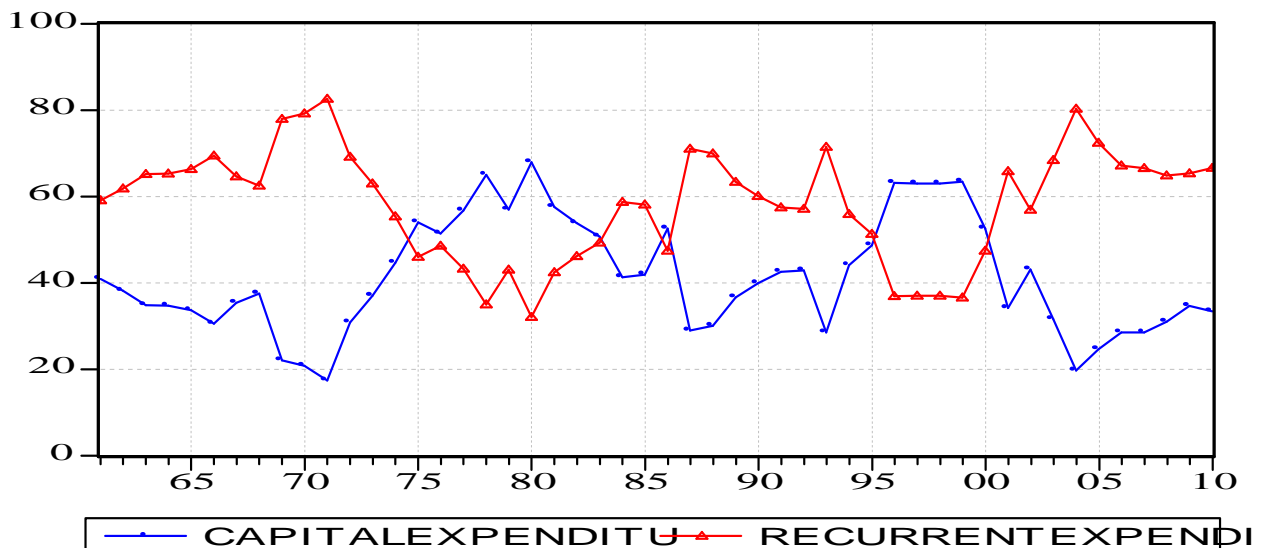
In 1969, public debt servicing received the highest share of 16.51%, dropped to 1.82% in 1975, increased to 11.71% in 1977 dropped to 1.71% in 1980, picked up in 1981 and rose steadily to 10.05% in 1986, 17.84% in 1987, 33.29% in 1988, 39.67% in 1991, 42.4% in 1993 the highest during the period. However, in the year 2003 debt servicing received 35.70% dropped to 7.76% in 2009 while ending the period at 12.03% in 2010.

The implication of the above was that public debt servicing on the average constituted a good part of Nigerian government expenditure since 1969 with so little to show for the debts while the health, education, agriculture, and economic sectors that actually grows the economy were left to suffer.

Interactions between the recurrent expenditure and capital expenditure as a percentage of total expenditure of the Nigerian government are as depicted in fig. 2 below with the recurrent expenditures taking the lead averagely and reaching their peak in 1971 at 82.59% and investment/capital expenditures reaching their peak in 1980 at 67.89%.

Secondly, investment expenditures were much lower than current expenditures evidencing the poor growth in the country's economy. This is because, investment expenditures is supposed to provide the infrastructural facilities for trade, manufacturing and human capital development. According to some empirical studies, public spending on transport and communication is positive, giving the case of crowding in of public expenditure on transport and communication, which is an important component at the smooth functioning of the private sector.

**Fig 3. Interactions between Government Recurrent and Capital Expenditures.**



Source; Authors' Calculations.

Third, the government has been reluctant to curb recurrent expenditures or increase allocation to the investment/capital expenditure as recurrent expenditure between year 2000 and 2010 constituted above 55% of government total expenditure.

### *Further Analysis.*

#### *Unit Root Test Result*

To guard against spurious regression and correlation result, this study took caution by checking the properties of the variables via the ADF test. The result is presented below and carried out

$$\Delta Y_t = \delta Y_{t-1} + u_t \quad \dots\dots\dots (1).$$

Without Constant and Trend

The hypothesis is:

H<sub>0</sub>:  $\delta = 0$  (Unit Root)

H<sub>1</sub>:  $\delta \neq 0$

Decision rule:

If  $t^* >$  ADF critical value, ==> do not reject null hypothesis, i.e., unit root exists.

If  $t^* <$  ADF critical value, ==> reject null hypothesis, i.e., unit root does not exist.

**Table 4: ADF (Augmented Dickey Fuller) Unit ROOT Test Result.**

Variable	t*	ADF critical value	Status	t*	ADF critical value
nlogGeneral Administration	-2.6110	2.298792	1(0)	-2.6120	-4.964792
nlogAgriculture	-2.6110	1.399545	1(0)	-2.6120	-5.879791
nlogConstruction	-2.6110	1.323764	1(0)	-2.6120	-6.225922
nlogDefense	-2.6819	1.679603	1(1)	-2.7158	-6.342583
Nlogeducation	-2.6110	1.339810	1(0)	-2.6120	-5.861173
nlogGDP	-2.6110	3.639771	1(1)	-2.6132	-7.861212
nlogHealth	-2.6110	1.764593	1(0)	-2.6120	-5.160922
Nlogtransport&Communication	-2.6110	2.103128	1(0)	-2.6120	-4.656393

Source: Author's Eview output

A non-stationary time series can be converted into a stationary time series by differencing (Johannes et al, 2011). The above table reports that none of the time series data of general administration, defence, education, health, agriculture, construction, transport and communication were stationary at level as their  $t^* >$  ADF statistics indicating unit root and hence the application of the differencing technique. During the differencing, general administration, agriculture, construction, education, health, transport and communication variables became stationary at 1<sup>st</sup> difference as their  $t^* <$  ADF statistics while defense and GDP became stationary at 2<sup>nd</sup> difference and hence the generation of 1<sup>st</sup> and 2<sup>nd</sup> difference data for the analysis. Given that the ADF test statistic of the variables at 1<sup>st</sup> difference and 2<sup>nd</sup> differences  $<$  critical values at

1%, we conclude that there is no unit root with the time series. Therefore, the time series are stationary.

### OLS Results.

Table 5. Estimation of  $\text{LognY}_t = X_0 + X_1\text{lognGA}_t + X_2\text{lognDef}_t + U_t$

Dependent Variable: DGDP				
Variable	Coefficient	Std. Error	t-Statistic	Prob.
DEFENCE	-0.151914	0.103635	-1.465862	0.1582
ADMINISTRATION	0.086216	0.077888	1.106926	0.2815
C	0.074346	0.020766	3.580236	0.0019
R-squared	0.142568	Mean dependent var		0.064839
Adjusted R-squared	0.056825	S.D. dependent var		0.085160
S.E. of regression	0.082705	Akaike info criterion		-2.025972
Sum squared resid	0.136802	Schwarz criterion		-1.877864
Log likelihood	26.29868	F-statistic		1.662729
Durbin-Watson stat	0.954771	Prob(F-statistic)		0.214782

Source; Authors' Eviews Output, 2013.

As expected, expenditure on defence have a negative relationship on economic growth in Nigeria while administration expenditure though positive does not have a significant effect on economic growth. The  $R^2$  and adjusted  $R^2$  are quite low and Durbin-Watson suggesting autocorrelation.

Table 6 Estimating equation 4  $\text{LognY}_t = X_0 + X_1\text{lognEdu}_t + X_2\text{lognHealth}_t + U_t$

Dependent Variable: DGDP				
Variable	Coefficient	Std. Error	t-Statistic	Prob.
DEDUCATION	0.072902	0.048567	1.501043	0.1402
DHEALTH	-0.050702	0.046392	-1.092906	0.2801
C	0.080221	0.012078	6.642013	0.0000
R-squared	0.046731	Mean dependent var		0.082066
Adjusted R-squared	0.005285	S.D. dependent var		0.081737
S.E. of regression	0.081521	Akaike info criterion		-2.116650
Sum squared resid	0.305699	Schwarz criterion		-2.000824

Source; Authors' Eviews Output, 2013.

In the above table, education has a positive relationship with economic growth (GDP) as expected while health has a negative relationship.

Table 7 Estimating equation 5  $\text{LognY}_t = X_0 + X_1\text{lognAgric}_t + X_2\text{lognConst}_t + X_3\text{lognTrans\&Com}_t + U_t$

Dependent Variable: DGDP				
Variable	Coefficient	Std. Error	t-Statistic	Prob.
DTRANSANDCOM	0.026801	0.040631	0.659623	0.5129
CONSTRUCTION	0.003447	0.009305	0.370407	0.7128
DAGRICULTURE	0.005530	0.029885	0.185052	0.8540
C	0.070846	0.026065	2.718036	0.0093
R-squared	0.021740	Mean dependent var		0.082066

Adjusted R-squared	-0.043478	S.D. dependent var	0.081737
S.E. of regression	0.083495	Akaike info criterion	-2.049955
Sum squared resid	0.313713	Schwarz criterion	-1.895520
Log likelihood	54.22389	F-statistic	0.333343
Durbin-Watson stat	1.502707	Prob(F-statistic)	0.801265

Source; Authors' Eviews Output, 2013.

As expected, all the economic services expenditure has positive relationships with economic growth suggesting that a growth in budgetary allocations to this sector will certainly drive economic growth. The result strongly suggests that such government expenditures are supposed to provide an enabling environment for economic growth and strengthen economic growth.

### **Concluding remarks**

Public expenditures have been increasing in Nigeria. The trend shows that the country started in 1961 with a surplus budget until 1970 when it recorded its first deficit of (455.10) billion naira which reached its peak at the end of the period, year 2010, with (1,105,439.78) billion naira.

Studies that relate government spending to growth have not clearly brought out the nature and type of government expenditures. Furthermore, the studies have been on highly aggregated data mainly cross-country or cross-sectional studies. In this study, we attempted to differentiate the data in a single country's public expenditures. This study identifies those components of public expenditure that could be protected and sustained. In fact, our results show that public expenditures on economic services (agriculture, construction, transport and communication) have enormous returns to economic stability and growth. Our results suggest that these expenditures crowd in private investment. Hence there is some evidence of positive correlation between government expenditure on economic services and economic growth. An increase in budgetary allocation to economic services will lead to an enhancement in economic stability. Therefore, in public spending, it is important to note that the effectiveness of the private sector depends on the stability and predictability of the public incentive framework, which promotes or crowds in private investment. Productive government spending or the quality of government spending is significant in enhancing the efficiency and productivity of the private sector, as the level and quality of public expenditures seems to determine the rate of growth.

Hence, in setting the targets for government expenditures, the growth objective should be seriously considered. Capital expenditure cuts may conflict with the growth objective, especially when targets are set without properly examining the composition of the total expenditure. Government should not find it difficult to cut its recurrent expenditures especially national assembly, internal security, reduce borrowing as to reduce transfers on public debt servicing expenditures. There appears to be a lot of padding of government expenditures with acronyms such as other social and community services, other economic services and other CFR charges. These should be disallowed or duly classified into significant expenditure components. More so, the composition of public expenditures could be carefully restructured and scrutinized so as to enhance growth and promote an enabling environment for private sector development.

### **REFERENCES**

Abu-Bader S, Abu-Qarn AS,( 2003).” Government Expenditures, Military Spending and

- Economic Growth: Causality Evidence from Egypt, Israel, and Syria.” *Journal of Policy Modeling*, Vol. 25, Nos. 6-7, pp 567-583
- Adefeso, H. A., and Mobalaji, H. I. (2010) “The Fiscal-Monetary Policy and Economic Growth in Nigeria: Further Empirical Evidence” *Pakistan Journal of Social Sciences*, Volume 7 Issue 2 Pp. 137-142.
- Adeoye, T. (2011) “Fiscal Policy and Growth of the Nigerian economy: An Empirical Perspective” *Nigerian Institute of Social and Economic Research Monographs*.
- Auerbach, A. J. (2009) “Implementing the New Fiscal Policy Activism” *National Bureau of Economic Research (NBER) Working Paper No. 14725*.
- Aloysius, A. A. (1998) “Cameroon’s Fiscal and Economic Growth” *AERC Research Paper 85 African Economic Research Consortium, Nairobi*.
- Barro, R.J (1991) “ Economic Growth in a Cross Section of Countries” *Quarterly Journal of Economics*. Vol 18 pp. 769-83
- Chuku, A. C. (2010) “Monetary and Fiscal Policy Interactions in Nigeria: An Application of a state-space Model with Markov Switching” *Journal of Applied Statistics* vol. No, 1 Pp. 39-51.
- Cooray A, 2009.” Government Expenditure, Governance and Economic Growth.” *Comparative Economic Studies*, Vol. 51, No. 3, pp 401-418.
- Davis, J. M; Ossowsk, R. and Fedelino, A (2003) “Fiscal Policy Formulation and Implementation in Oil-Producing Countries” *International Monetary Fund* (on-line, [www.imf.org/external/indc.htm](http://www.imf.org/external/indc.htm)) retrieved on 11<sup>th</sup> Jan, 2013)
- Eastely, W and Sergio R “ Fiscal Policy and Economic Growth: An Empirical Investigation” *Journal of Monetary Economic* Vol 32 pp. 417-58
- Huang, H. and Padilla, A. J. (2002) “Fiscal Policy and The Implementation of the Walsh Contract for Central Banker’s) *ANNALS of Economics and Finance*, Volume 3 pp. 27-42.
- Iledo, V. and Ribeiro, M. P. (2011) “Fiscal Policy Implementation in Sub-Saharan Africa”. *IMF Working Paper WP/11/172*.
- Johannes, T.A., Njong, A.M. and Cletus, N. (2011) “Financial development and economic growth in Cameroon, 1970-2005”, *Journal of Economics and International Finance* Vol. 3(6), pp. 367-375.
- Kermendi, R.C and Maguire D. G “ Microeconomic Determinants of Growth: Cross- country Evidence” *Journal of Monetary Economic*, Vol 16 pp. 141-6

- Komain J, Brahmasrene T. (2007) "The Relationship between Government Expenditures and Economic Growth in Thailand". *Journal of Economics and Economic Education Research*.3 .
- Laudau, D (1986) "Government and Economic Growth in the Less- Developed Countries : An Empirical Study for 1960-80, *Economic Development and Cultural Change, Vol 35 pp.35-75*
- Nigeria Bureau of Statistic (2010) *Central Bank of Nigeria Statistical Bulletin 2005, 2006, 2009, 2011*).
- Njoku, A. and Ihugba, O. A (2011) "Unemployment and Nigerian Economic Growth (1985-2009)" *Proceedings of the International Conference on Teaching, Learning and Change. Organized by International Association for Teaching and Learning (IATEL)*.
- Nwankwo, A. (2010) "Nigeria's Foreign Debt: The Good, Bad and Bizzare". *Vanguard 17 Nov*.
- Nworji. I.D., Okwu, A.T., Obiwuru, and T.C, Nworji, L.O (2012) Effects of Public Expenditure on Economic Growth in Nigeria: A Disaggregated Time Series Analysis, *International Journal of Management Sciences and Business Research Vol 1 issue 7 .pp 1-15*
- Odewummi, R. M. (2012) "The Nigerian Fiscal and Monetary Policy - Challenges and Prospect" (Online – [www.olafideavociate.com/olajide/p](http://www.olafideavociate.com/olajide/p)) Retrieved on 12 Jan. 2013).
- Ogbole, F. O. Amadi, S. N. and Essi, I. D. (2011) "Fiscal Policy: Its Impact on Economic Growth in Nigeria (1970-2006)" *Journal of Economics and International Finance Vol. 3 (6) Pp. 407-417*.
- Okwo, I. M. (2010) "An Overview of Public Debt and its Management Strategies in Nigeria (1980-2007) *ESUT Journal of Accountancy Vol. 1 No. 2 pp. 237-248*.
- Olajide, B. And Adekoya, F. (2012) "Economic Healing: Revisiting 2012 Fiscal Policy" (Online – [www.nigerianbestforum.com](http://www.nigerianbestforum.com) – retrieved on 13<sup>th</sup> Jan. 2013).
- Olawunmi, O. and Ayinla, T. A (2007) "Fiscal Policy and Nigerian Economic Growth". *Journal of Research in National Development. Vol. 5, No. 2 pp. 19-29*.
- Omitogun, O. and Ayinla, T. A. (2007). "Fiscal Policy and Nigeria Economic Economic Retirement (online- [www.termpaperwarehouse.com-retrieved](http://www.termpaperwarehouse.com-retrieved) on 12<sup>th</sup> January, 2012).
- Otani, I and Delano, V.(1990) "Long Term Growth in Developing Countries and Its Determinants: An Empirical Analysis" *World Development, Vol 18 pp. 769-83*

World Economic Output (2007) Growth” (Online-www-transcampus.org retrieved on 13<sup>th</sup> Jan, 2013.

Wu, S., Tang, J and Lin, E (2010) “ The Impact of Government Expenditure on Economic growth: How sensitive to the Level of development” *Journal of Policy Modeling Vol 32 Issue 6, pp. 804-817.*

Ram, R (1986) “Government Size and Economic Growth:A New Framework and Some Evidence From Cross- Section and Time- Series Data” *American Economic Review Vol 76 pp. 191-203*

Reem, H. (2009) “What is Fiscal Policy” Bonds International Monetary Fund (on-line – [www.imf.org](http://www.imf.org)).